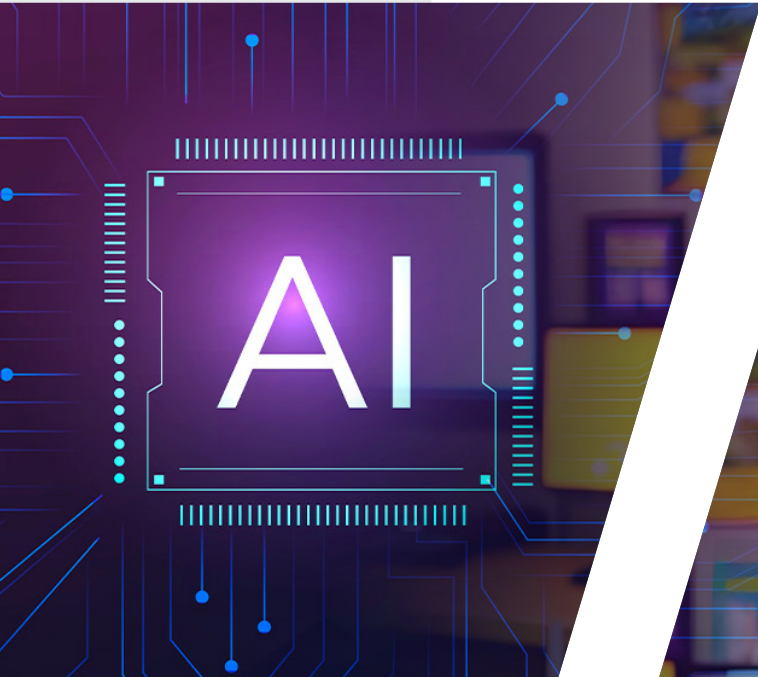


**EDUCATION
INNOVATION LABS**
www.ednolabs.org



Improving Education
Quality with Technology

Partners



Ministry of Education
REPUBLIC OF GHANA

www.moe.gov.gh



CENDLOS
CENTRE FOR NATIONAL
DISTANCE LEARNING AND
OPEN SCHOOLING
Nexus of virtual learning

www.cendlos.gov.gh



**Ghana Education
Service (GES)**

www.ges.gov.gh



www.unicef.org/ghana



www.meltwater.org



CAMFED

www.camfed.org



www.helpingafrica.org

TECHAiDE

www.techaide.global



implementers
people • projects • places

www.theimplementers.org

STEMAIDE

www.stemaide.com



GSET
Ghana Society for Education Technology

www.gset.education

TABLE OF CONTENT

Table Of Content

Partners	2
Table Of Content	3
Project Goals and Expectation	4
- Background	
- Project Goals	
- Project Locations	
- Project Team	
Proposal Intervention	9
Phase 1 Timeline	10
Project Timeline	11
Training	12
Beneficiaries	13
Expected Results and Indicators	14
- For Schools	
- For Teachers	
- For Students	
Development Partners	16
EDULab	17
ASANKA	18
Frequently Asked Questions	19

Project Goals and Expectation

10,000+ **Students**
to be Reached.

1,900+ **Teachers**
to be Trained.

200+ **Schools**
to be Served.

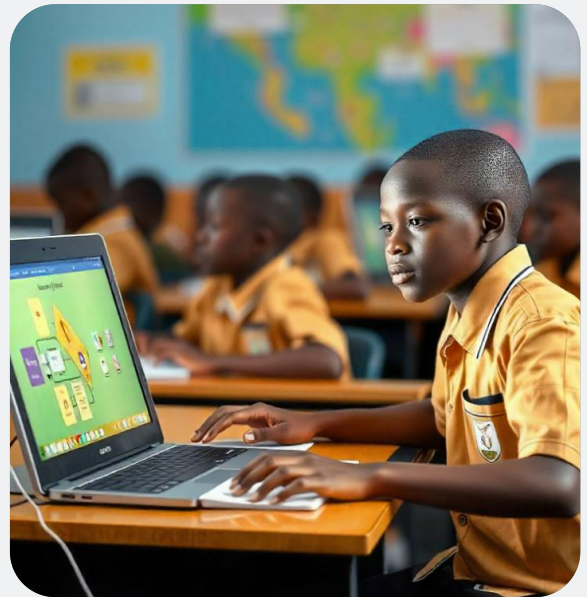
20 **ASANKA**
Devices to be Distributed.

20 **EDULab**
to be Established.

12 **Regions**
to be Covered.

Background

Education is a critical driver of economic and social development. In Ghana, significant strides have been made towards achieving universal primary education, but challenges persist, particularly in the areas of quality and access to educational resources. The Sustainable Development Goal (SDG) 4 aims to ensure inclusive and equitable quality education and promote lifelong learning opportunities for all. Despite progress, reports indicate that many schools in Ghana still face inadequate infrastructure, insufficient learning materials, and limited access to modern educational technologies (UNESCO, 2019).



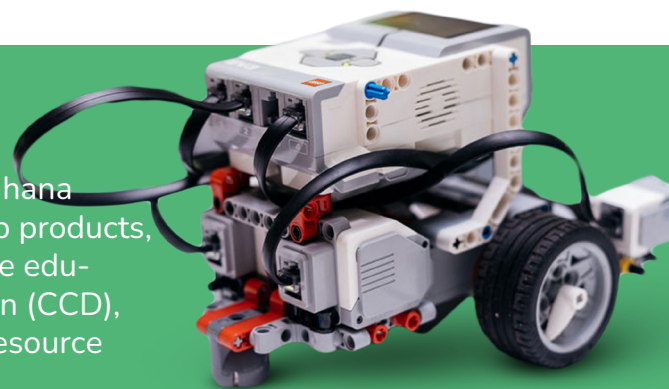
According to UNICEF's Representative in Ghana, Anne-Claire Dufay, the MoE/GES' Basic Education Rapid Risk Assessment conducted during the COVID-19 pandemic revealed that 66% of schoolchildren faced difficulties accessing digital learning due to a lack of connectivity and other facilities (Ghana Today). This digital divide exacerbates educational inequalities and hampers the country's progress towards achieving SDG 4. Addressing these challenges requires innovative solutions that leverage technology to enhance teaching and learning experiences. Initiatives aimed at improving digital access in Ghanaian schools are crucial for bridging the educational gap and ensuring that all students benefit from modern educational tools and resources.

Project Goals

1. Conduct evidence-based research to enhance education in Ghana, aiming to reach over **10,000+** students and train more than **1,900+** teachers.
2. Establish **20** modern education labs equipped with offline ASANKA technology across **12** regions in Ghana, providing innovative learning environments.

Context

TECHAiDE is committed to transforming education in Ghana through innovative technological solutions. Our flagship products, ASANKA and EDULab, are designed to address the core educational challenges of Curriculum & Content Distribution (CCD), Evidence-based Decision Making (EDM), and Human Resource Management (HRM).



Project Locations

In strategic collaboration with the Ministry of Education, the University of Ghana Legon, CAMFED, and IMPLEMENTERS, 20 lab sites have been selected to serve 205 schools across 64 communities. These labs are set up in peri-urban and rural schools with moderate student enrollment and teaching staff but limited resources, yet making significant educational progress in their communities.

The selected schools are grouped into **4** cohorts for the first phase of this project: **3** schools from the Accra cohort, **10** from the Gomoa cohort, **109** from the Bogoso cohort, and **85** from the Kyebi cohort.



Project Team



Kafui A. Prebbie
CEO | TECHAiDE



Thomas Ehgan Ekuban
Head of Business Operations | TECHAiDE



Nana Gyamfi Adwabour
Executive Director | CENDLOS



Prince C. A. Duah
Dir. for Sch. & instructions | GES



Mohammed Abid Azam
DPG Director | UNICEF



Christopher Nkrumah
Education Expert | UNICEF Ghana



Fairuza Abdul-Rashid Safian
National Director, CAMFED Ghana



Jonathan Kotei
IT Manager | CAMFED



Ashwin Ravichandran
Portfolio Advisor | MEST



Mr. Oluwafemi
Program Director | MEST Africa



Laurin Assiamah

PMP Head, Portfolio & Operations,
Implementers



Richard Brefo Boateng

Assistant Impacts Manager
Implementers



Gerald Sabin-Quarm

Project Lead | TECHAiDE



Dr. Faiza Omar

Research Lead | TECHAiDE



Miracule Gavor

Founder and Executive Director | GSET



Noble S. Dzreh

Continous Professional Development
(CPD) Associate | GSET



Joshua Agyemang

Chief Evangelist | STEMAiDE



Prince B. Asare

Chief Executive Officer | STEMAiDE



Proposal Intervention

This project aims to establish 20 Innovation Labs in primary and junior high schools across Ghana to validate and test the functionalities of ASANKA and EDULab over three years. The steps for executing this project are as follows:

Lab Selection:

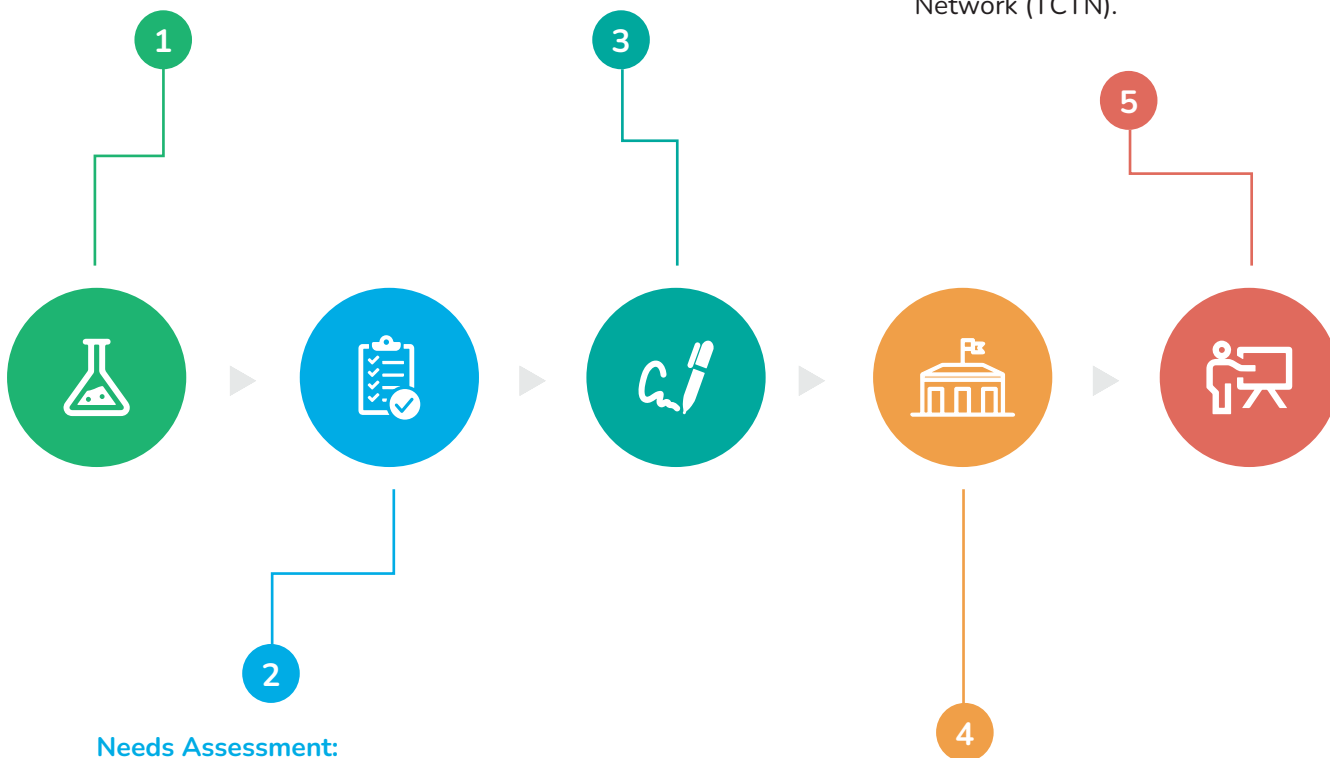
labs will be selected based on the Ministry of Education sector, the Nonprofit sector, and the Corporate sector. Additionally, 15 existing Yamoransa Labs in Ghana will be upgraded to meet modern EDULab standards.

MOU Signing:

Sign Memoranda of Understanding (MOU) with the five schools and partners to ensure compliance and cooperation throughout the two-year period.

Teacher Training:

Train teachers to effectively use EDULab and ASANKA in their teaching. Provide stipends to teachers managing the EDULabs as motivation. Teachers participating in the training will receive Continuing Professional Development (CPD) points and become part of the TECHAiDE Certified Trainers Network (TCTN).



Needs Assessment:

Conduct a thorough assessment of the current conditions of the selected labs to identify specific needs and areas for improvement.

Establishment of Labs:

Upgrade existing computer labs with modern EDULab standards, providing routers for one-time internet connections to sync data with the cloud and update ASANKA with newer content.



Phase 1 Timeline:

1. **Start Date:** July 1, 2024
2. **End Date:** November 30, 2024

Phase One Details

Phase One Activities:

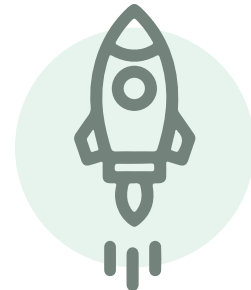
1. **Lab Selection:** Identifying and selecting schools based on specific criteria.
2. **Needs Assessment:** Conducting thorough evaluations to understand the current conditions and requirements of the selected labs.
3. **MOU Signing:** Formalizing agreements with the selected schools and partners to ensure compliance and collaboration throughout the project.
4. **Establishment of Labs:** Upgrading and setting up the computer labs to meet modern EDULab standards.
5. **Teacher Training:** Training educators on how to effectively use EDULab and ASANKA in their teaching methodologies.

Phase 2, 3 & 4 Timeline

Following the successful completion of the pilot phase, the project will transition into full operation and monitoring:

Operation and Monitoring:

- **Start Date:** December 1, 2024
- **End Date:** July 31, 2026

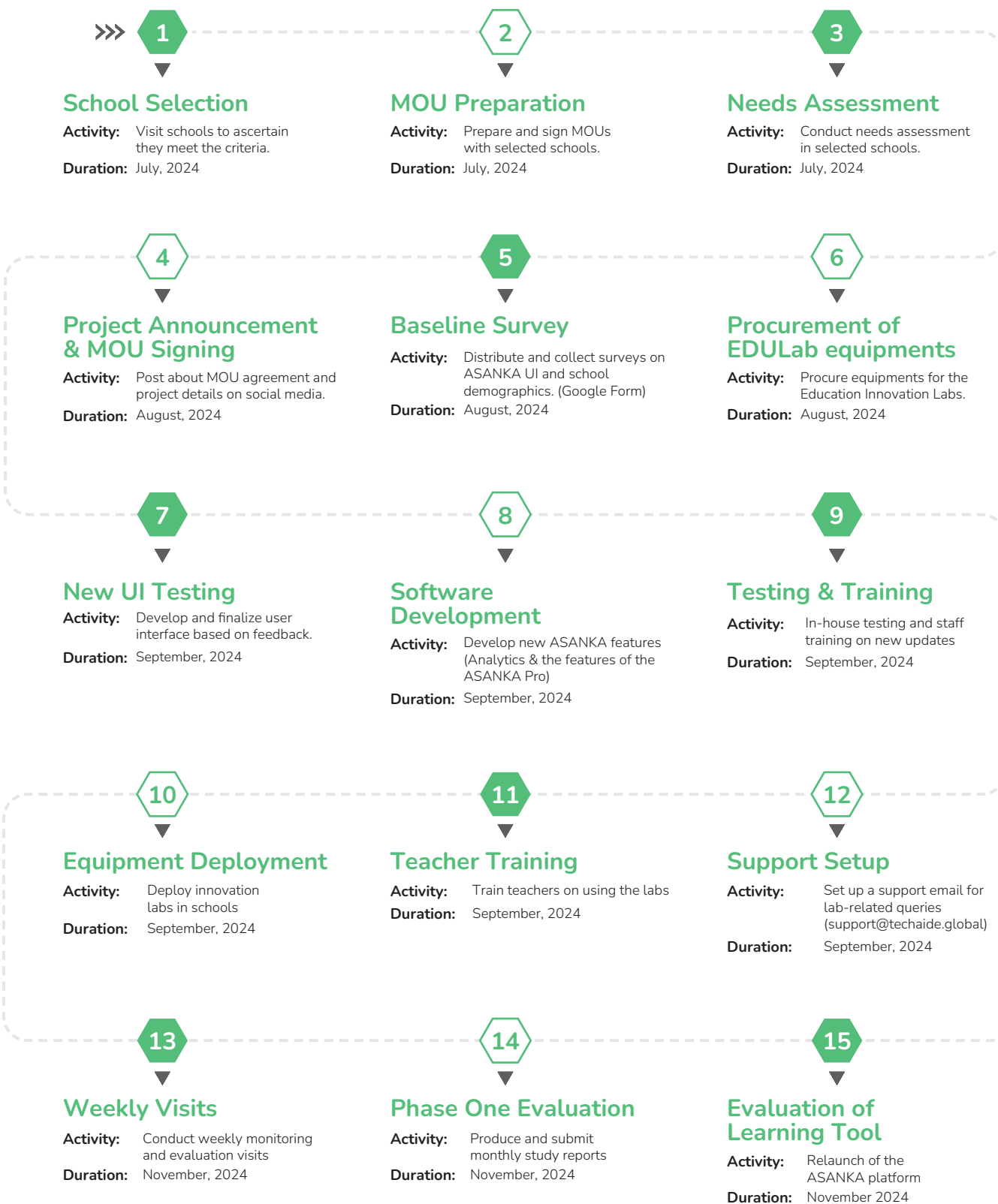


Phase 2, 3 & 4 Details:

1. **Weekly Monitoring and Evaluation (M&E):** Weekly visits will be conducted to monitor progress, address challenges, and gather feedback from teachers and students.
2. **Feedback Collection:** Continuous feedback will be collected to refine the implementation process, ensuring the labs meet the needs of the users.
3. **White Paper Report:** At the end of the pilot phase, a comprehensive white paper report will be prepared, documenting the findings, insights, and recommendations based on the pilot phase experiences. This report will serve as a guide for scaling up the project and making any necessary adjustments.

PROJECT TIMELINE

Project Timeline: Pilot Phase (July to November)



Training

With over **1,900+** teachers participating in free digital literacy and STEM training through ASANKA and EDUlab, we invite you to join the **TECHAiDE Certified Trainers Network (TCTN)**. Members receive exclusive access to valuable resources, support, and a community of like-minded professionals. The training is divided into **Tier 1 (Basic)**, **Tier 2 (Intermediate)**, and **Tier 3 (Advanced)**, with teachers progressing through the tiers by enhancing their skills and earning higher standing and recommendations within the network.



Tier I
Basic

Getting Started with Digital
Tools in Education.



Tier II
Intermediate

Developing Proficiency in
Modern Education Practices.



Tier III
Advanced

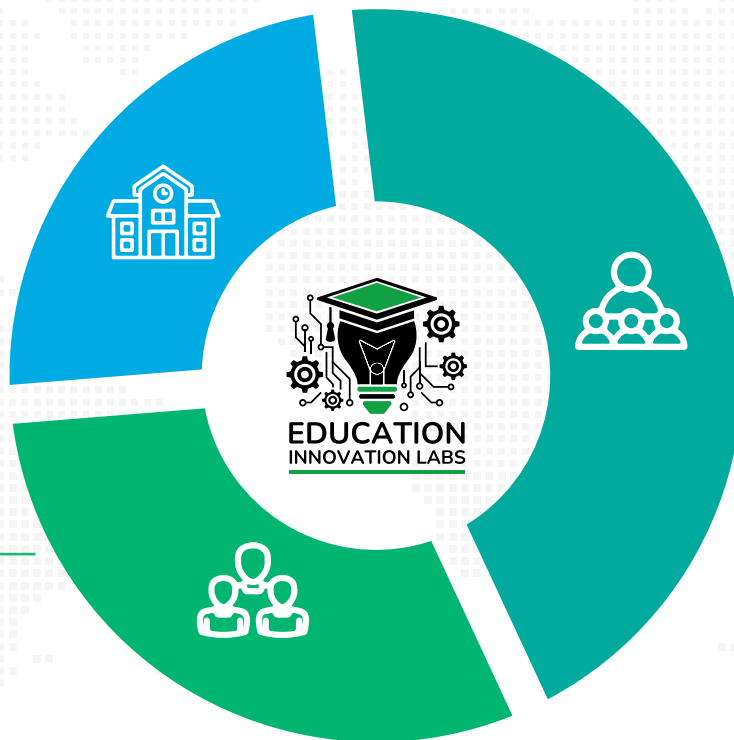
Achieving Excellence in
Modern Education Practices

Beneficiaries



205 Schools

Benefit from improved infrastructure and educational resources



10,000+ Students Across 20 Locations

Benefit from enhanced learning experiences through access to modern educational technologies and resources



1,900+ Teachers

Receive training and support to integrate technology into their teaching practices

Expected Results and Indicators

- **Improved Educational Outcomes:** Enhanced student performance in ICT, Science, English, and Mathematics, as measured by standardized test scores and classroom assessments.
- **Increased Access to Educational Resources:** Significant increase in the number of students and teachers accessing and utilizing ASANKA and EDULab resources.
- **Enhanced Teacher Capacity:** Number of teachers trained and certified through the TECHAiDE Certified Trainers Network (TCTN).
- **Data-Driven Decision Making:** Increased use of analytics from ASANKA for evidence-based decision-making by school administrators and policymakers.
- **Sustainable Development:** Progress towards achieving SDG 4 by providing inclusive and equitable quality education and promoting lifelong learning opportunities.



- For Schools

1. **Free Upgrade to EDULab Status:** Transform the school's computer lab into a state-of-the-art educational hub at no cost, providing students with cutting-edge technology and learning tools.
2. **Increased Visibility:** Gain nationwide recognition by being featured on the ASANKA and TECHAiDE websites, highlighting the school's commitment to innovation and excellence in education.
3. **Latest Teacher Training:** Equip the school's teachers with the most up-to-date training, enhancing their professional skills and significantly improving their classroom effectiveness.
4. **Attract More Students:** Become the top choice for parents and students in the area with upgraded, modern facilities, leading to increased enrollment and a stronger school community.
5. **Enhanced Learning Environment:** Benefit from improved infrastructure and resources, creating a more engaging and supportive environment that fosters better educational outcomes.



- For Teachers

1. **Free CPD Training:** Receive top-notch training at no cost, contributing to your Continuing Professional Development (CPD) points and advancing your teaching career.
2. **Join the TCTN Network:** Become a member of the prestigiousTECHAiDE Certified Trainers Network (TCTN), gaining exclusive access to valuable resources, support, and a community of like-minded professionals.
3. **Increased Opportunities:** Be featured on the TCTN website, connecting with parents looking for tutoring services in your area, and providing you with additional income and professional opportunities.
4. **Stipends for Lab Managers:** Earn stipends as a lab manager, recognizing and rewarding your extra efforts in maintaining and utilizing the advanced technology for student benefit.
5. **Professional Growth:** Enhance your teaching skills and effectiveness through advanced training and resources, leading to greater job satisfaction and career progression.



- For Students

1. **21st Century Digital Literacy:** Acquire essential digital skills that are crucial for success in today's technology-driven world, preparing you for future academic and career opportunities.
2. **Enjoy STEM Education:** Engage deeply with Science, Technology, Engineering, and Mathematics (STEM) subjects, developing critical thinking and problem-solving skills essential for the future.
3. **Personalized Learning:** Benefit from technology that adapts to your individual learning pace and style, ensuring you understand and retain information more effectively.
4. **Broader Access to Educational Content:** Access a vast array of educational materials through ASANKA and EDULab, exploring topics beyond the standard curriculum and expanding your knowledge.
5. **Enhanced Learning Experience:** Enjoy a more interactive and engaging learning environment with the latest educational technologies, making school more enjoyable and effective.



Development Partners

- **Exclusive Access to First-Hand Data:** Gain unparalleled access to real-time data from **205** schools, **1900+** teachers, and **10,000+** students. This data will be invaluable for creating informed policies and designing impactful educational projects, ensuring your investments yield maximum benefits.
- **Comprehensive Reporting and Nationwide Access:** Receive detailed reports on project progress and outcomes, providing transparency and accountability. Additionally, enjoy exclusive access to nationwide labs, enabling you to conduct surveys, gather insights, and further your research across the country.
- **Seamless Content Updates via ASANKA:** Leverage the innovative ASANKA platform to update your educational content effortlessly. The syncing feature allows you to connect directly to cloud accounts, ensuring that all stakeholders have access to the latest and most relevant information, enhancing the impact of your materials.
- **Significant Scale and Measurable Impact:** Invest in a project with a large-scale reach—impacting **10,000+** students, **1,900+** teachers, and **205** schools over three years. The initial 6-month pilot phase ensures that the project is fine-tuned and ready for broader implementation, maximizing its effectiveness and sustainability.
- **Leadership in Educational Innovation:** Position your organization at the forefront of educational innovation. By supporting this transformative project, you demonstrate a commitment to enhancing education at a systemic level, attracting further opportunities, strategic partnerships, and recognition as a key player in the field.



Excel with EDULab

EDULab offers a suite of advanced tools and resources designed to elevate educational experiences and outcomes.

140+

EDULabs
Installed

5,560+

Computers
Installed

309K+

Students
Impacted

17k+

Teachers
Reached

EDULab Benefits

EDULab offers a suite of advanced tools and resources designed to elevate educational experiences and outcomes.



1. Comprehensive Digital Learning Tools

2. Interactive and Engaging Content

3. Hands-On STEM Learning

4. Immersive and Creative Technologies

5. Students Performance Tracking

6. Eco-Friendly Solutions

www.techaide.global/edulab



Smart Learning, Anywhere.

Harness the power of ASANKA for Information Distribution, Data Collection, Education, and Entertainment.

560+

ASANKA Devices
Issued

100K+

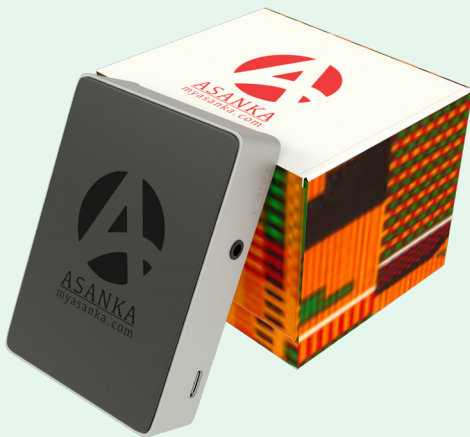
Students
Impacted

16K+

Teachers
Reached

ASANKA Benefits

ASANKA provides offline access to localized and relevant digital educational content, making it a cost-effective solution for schools and families, especially in areas with limited internet connectivity.



1. Proprietors: Improve exam scores

2. Teachers: Monitor progress and performance

3. Parents: Track progress of wards

4. Students: Self-paced learning

5. Non-Profits: Access to data

6. Education Ministry: National Curriculum Distribution

www.myasanka.com

FREQUENTLY ASKED QUESTIONS



Education Innovation Labs

1 Q: What are the Education Innovation Labs powered by ASANKA?

A: The Education Innovation Labs are state-of-the-art learning environments powered by ASANKA, designed to enhance educational quality and accessibility in Africa's primary and junior high schools using innovative technologies.

2 Q: How many Innovation Labs will be established?

A: Twenty (20) Innovation Labs will be established across Ghana's primary and junior high schools in the first pilot phase.

3 Q: What are the main goal of the Education Innovation Labs?

A: The main goals of the Education Innovation Labs are:

1. Conduct evidence-based research to enhance education in Ghana, aiming to reach over **10,000+** students and train more than **1,900+** teachers.
2. Establish **20** modern education labs equipped with offline ASANKA technology across **12** regions in Ghana, providing innovative learning environments.

4 Q: Who is behind the Education Innovation Labs project?

A; The project utilizes ASANKA, an offline device developed by TECHAiDE, with backing from partners including UNICEF Ghana, the Ministry of Education, MEST Africa, and other education sector contributors

5 Q: What role does ASANKA play in the Innovation Labs?

A: ASANKA (All Subjects and New Knowledge Access) is the primary technology platform utilized in the labs to deliver educational content, enhance learning, and promote digital literacy.

6 Q: How will the Innovation Labs benefit students?

A: Students will benefit from modern educational tools, interactive learning experiences, and enhanced digital literacy, leading to improved academic performance and better future opportunities.

FREQUENTLY ASKED QUESTIONS

Education Innovation Labs



7 Q: How will teachers be supported in the Innovation Labs?

A: Teachers will be trained to use the technology and resources in the labs effectively, equipping them to implement innovative teaching strategies in their classrooms. Trained teachers will receive Certification.

8 Q: How were the locations selected for the Innovation Labs?

A: Locations are chosen based on factors like need, accessibility, basic infrastructure, and potential impact on the local community. The selection process also includes consultations with educational authorities.”

9 Q: What technology and resources will be available in the Labs?

A: The labs will be equipped with ASANKA and EDULab components, delivering interactive learning tools, educational software, and digital content specifically designed for the Ghanaian curriculum, all without internet access

10 Q: Can schools outside of the selected locations benefit from the project?

A: While the initial focus is on the selected locations, the project aims to expand and share resources with other schools in the future, potentially through mobile labs or digital platforms.

11 Q: How does the project address issues of digital divide and equity?

A: The Education Innovation Labs are designed to provide equal access to quality education for all students, particularly those in underserved and rural areas, helping to bridge the digital divide.

12 Q: How will the success of the Innovation Labs be measured?

A: Success will be assessed using metrics including student engagement, enhancements in learning outcomes, rates of technology adoption, and the impact on teacher professional development.

13 Q: Are there opportunities for community involvement in the Innovation Labs?

A: Yes, the project encourages potential community involvement through workshops, events, and partnerships with local organizations to ensure the labs serve the broader community’s needs.

FREQUENTLY ASKED QUESTIONS



Education Innovation Labs

14 Q: How can organizations partner with the Education Innovation Labs project?

A: Organizations can get involved by providing access to resources, expertise, financial support or partnering on specific lab initiatives. For more information, interested organizations can contact TECHAiDE.”

15 Q: What is the long-term vision for the Education Innovation Labs?

A: The long-term vision is to create a sustainable network of Innovation Labs throughout Africa, beginning in Ghana, that adapts to the evolving needs of education and promotes a culture of lifelong learning and innovation.”

16 Q: How will the Innovation Labs be maintained and supported?

A: Maintenance and support will be provided through a combination of local partnerships, government involvement, and ongoing training for teachers to ensure the labs remain functional and impactful.

17 Q: What kind of educational content will be available in the Labs?

A: The labs will have a broad selection of educational content, including interactive lessons, digital textbooks, multimedia resources, and materials aligned with the Ghanaian curriculum.”

18 Q: Will students and teachers have access to the Labs outside of school hours?

A: Depending on the school’s policies, the Labs may be available for after-school programs, community use, or special educational events, providing extended learning opportunities.

19 Q: How does the project align with Ghana’s national education goals?

A: The project advances Ghana’s national education goals by improving the quality of education, fostering digital literacy, and providing students with the tools and resources necessary to thrive in a modern economy.

20 Q: How can the public support the Education Innovation Labs initiative?

A: The public can support the initiative by raising awareness, volunteering, or contributing to the project. Every effort helps create a lasting impact on education in Ghana.

OUR CONTACT DETAILS



TECHAiDE Head office
1 Cardinal Ln, Accra, Ghana
GA-0535-7244



+233 26 573 3200



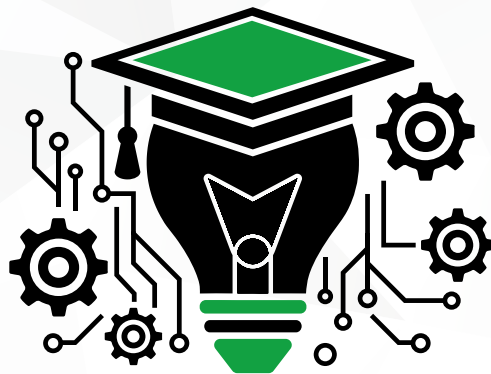
+233 303 976 600



admin@TECHAiDE.global
support@TECHAiDE.global

References:

- GBC Ghana Online. "COVID-19: 66% of school children unable to access digital learning – UNICEF." Retrieved from GBC Ghana Online.
- UNESCO. (2019). Ghana Education Sector Analysis. Retrieved from UNESCO Ghana Education Report
- World Bank. (2018). World Bank Report on Ghana's Education. Retrieved from World Bank Report on Ghana's Education



**EDUCATION
INNOVATION LABS**

www.ednolabs.org